

Twickenham & Richmond TRIBUNE

Contents

- TickerTape
- COVID-19
- Demonstrating the future
- Das Europakoncil 2022
- Twickenham Beer and Cider Festival
- Email from America
- Traffic measures in Richmond and Bushy parks
- Gothic Twilight Tour
- Twickers Foodie
- Review
- Traveller's Tales
- WIZ Tales: Iran
- Ambulance Strike

Contributors

- Simon Fowler
- The Richmond in Europe Association
- John Austin
- The Royal Parks
- Strawberry Hill House
- Alison Jee
- Mark Aspen
- Doug Goodman
- World InfoZone
- Brentford FC
- RFU
- GMB Union
- NAO
- LBRuT

Editors

Berkley Driscoll
Teresa Read



14th October 2022

T&RT

Pope's Villa, Strawberry Hill

Photo by Berkley Driscoll

TickerTape - News in Brief

Dispersal order around Richmond Green

Richmond Police have said a section 35 dispersal order has been put in place around Richmond Green following reports of anti-social behaviour. This will be in place until midnight on the 14th October.

SWR – Weekend Rail disruption, Strawberry Hill area

The lines in the Strawberry Hill area will be closed all weekend due to maintenance work.

Saturday 15th October

- London Waterloo to Shepperton services will terminate at Kingston.
- Buses will run between Kingston and Shepperton.
- London Waterloo to London Waterloo via Wimbledon and Kingston services will start from Twickenham.
- Additional trains will run between London Waterloo and Kingston via Wimbledon.
- Buses will run between Kingston and Twickenham.

Sunday 16th October

- London Waterloo to Shepperton services will be diverted after New Malden and will terminate at Hampton Court. These services will call additionally at Surbiton.
- Buses will run between New Malden and Shepperton via Kingston.
- London Waterloo to London Waterloo via Wimbledon and Kingston services will be diverted after New Malden and will terminate at Hampton Court. These services will call additionally at Surbiton.
- Buses will run between New Malden and Twickenham via Kingston.
- The afternoon and evening London Waterloo to Kingston via Hounslow services will terminate at Hounslow.
- Some London Waterloo to Windsor services will be retimed to depart London Waterloo earlier and will make additional stops between London Waterloo and Twickenham.



skyelectrical

Replacing your halogen recessed lights with LEDs will:

- ✓ SAVE ENERGY
- ✓ SAVE YOU MONEY
- ✓ PROVIDE BETTER LIGHTING

So...

- ✓ CALL US TODAY FOR A FREE HOME ASSESSMENT AND QUOTE

For a timed appointment please call Sky Electrical on 020 8894 1799
22 Fifth Cross Road, Twickenham, Middlesex, TW2 5LF
www.skyelectrical.co.uk

020 8894 1799
info@skyelectrical.co.uk

World Health Organization

Weekly Epidemiological Update published 12 October 2022

Globally, the number of new weekly cases decreased by 10% during the week of 3 to 9 October 2022 as compared to the previous week, with over 2.8 million new cases reported. The number of new weekly deaths remained stable (-1%) as compared to the previous week, with about 9,000 fatalities reported. As of 9 October 2022, over 618 million confirmed cases and over 6.5 million deaths have been reported globally.

At the regional level, the number of newly reported weekly cases decreased or remained stable across the six WHO regions: the African Region (-41%), the South-East Asia Region (-25%), the Western Pacific Region (-21%), the Eastern Mediterranean Region (-14%), the Region of the Americas (-10%) and the European Region (-3%). The number of new weekly deaths decreased or remained stable across five regions: the African Region (-53%), the South-East Asia Region (-23%), the European Region (-12%), the Eastern Mediterranean Region (similar to the previous week) and the Western Pacific Region (+1%); while the number of deaths increased in the Region of the Americas (+11%).

At the country level, the highest numbers of new weekly cases were reported from Germany (508,749 new cases; +12%), China (333,830 new cases; +10%), France (323,787 new cases; +4%), the United States of America (283,220 new cases; -9%) and Italy (280,947 new cases; +30%). The highest numbers of new weekly deaths were from the United States of America (2,817 new deaths; +3%), Brazil (767 new deaths; +168%), the Russian Federation (731 new deaths; +3%), Japan (567 new deaths; +1%) and China (412 new deaths; +12%).

Special Focus: Update on SARS-CoV-2 variants of interest and variants of concern: Prevalence of VOCs:

During epidemiological week 37 (12 to 18 September 2022), Omicron BA.5 descendent lineages continued to be dominant accounting for 76.2% of sequences submitted to GISAID; followed by BA.4 descendent lineages (including BA.4.6), which accounted for 7.0%; and BA.2 descendent lineages (including BA.2.75), which accounted for 3.9% of sequences. During the same week (12 to 18 September), unassigned sequences (presumed to be Omicron) accounted for 12.8% of sequences submitted to GISAID.

European Region

In the European Region, the number of new weekly cases remained similar (-3%) to the number of cases reported during the previous week, with over 1.6 million new cases reported. Five (8%) countries reported increases in new cases of 20% or greater, with some of the highest proportional increases observed in San Marino (221 vs 157 new cases; +41%), Austria (96,973 vs 77,688 new cases; +25%) and Greece (54,649 vs 45,001 new cases; +21%). The highest numbers of new cases were reported from Germany (508,749 new cases; 611.7 new cases

per 100,000; +12%), France (323,787 new cases; 497.8 new cases per 100,000; +4%) and Italy (280,947 new cases; 471.1 new cases per 100,000; +30%).

Over 2,800 new weekly deaths were reported in the Region, a 12% decrease as compared to the previous week. The highest numbers of new deaths were reported from the Russian Federation (731 new deaths; <1 new death per 100,000; +3%), Italy (348 new deaths; <1 new death per 100,000; +32%) and Spain (289 new deaths; <1 new death per 100,000; +70%).

IN THE NEWS THIS WEEK

The Times of India: Never mind pandemic fatigue, we aren't free of Covid yet

Sky News: COVID boosters available for over-50s as online bookings for NHS flu jabs trialled for first time

NHS: NHS urges six million people to get their Covid autumn booster

London.Gov: Mayor urges Londoners to take-up their COVID and flu vaccines

New York Times: US FDA authorises updated booster for children aged 5 and older

Livemint: 2 highly contagious Omicron variants with 'fast-spreading speed' found in China.

Reuters: Europe likely entering another COVID wave, says WHO and European Disease Prevention

NDTV: India Reports 2,678 New COVID-19 Cases In 24 Hours

NBC News: Potential 'severe' flu season ahead, CDC director warns as cases rise

BBC: Ringo Starr cancels North America tour with Covid



The Tree Agency

darryl parkin

The Treehouse
25 King Edwards Grove
Teddington, Middlesex TW11 9LY
Telephone 020 8274 0107
Mobile 07960 123580
Fax 020 8274 0119
info@thetreeagency.co.uk
www.thetreeagency.co.uk

Demonstrating the future

By Simon Fowler

One hundred years ago wireless was regarded by many as being a dangerously untried medium. The public had to be convinced that the new service had something that would be useful to them.

One way was to provide demonstrations of the new service. Goslings, a department store in Richmond, for example, regularly laid on demonstrations. Sometimes it was at the shop in George Street, but occasionally they took place elsewhere.

In December 1922, the Philanthropic Society, for example, was entertained at the Reform Café on Hill Street.

‘The feature of the evening was the first public wireless concert, a slight defect in the wiring caused a little trouble to the operator, but good results were obtained later in the evening. An experiment was tried for the first time in picking up the concert on a 16ft insulated wire by the use of six low frequency valves. This was a success, and amongst the items received was an excellent ‘cello solo by W.H. Squire.’



A group of enthusiasts in the Thames Valley Radio Association also organised demonstrations in local hospitals. Things did not always go smoothly. An entertainment at St John’s Hospital in Twickenham was ruined by an experimenter at Twickenham continually making ‘his set oscillate. We can only put this down to inexperience. as we hardly think that anyone would deliberately spoil concerts.’ A more successful evening took place at Teddington Cottage Hospital, which included: ‘a most successful concert received from the British Broadcasting Co. (2LO.). The rendering and reception of “Madame Butterfly” was perfect and was highly appreciated by all present.’

And of course, people had to buy equipment in order to use the new service. Initially enthusiasts had made their own sets and festooned their gardens with aerials to pick up transmissions. But most customers just wanted to listen to broadcasts, without worrying too much about what went on inside their radios. Shops tried hard to overcome these concerns. In their advertising Goslings stressed:

The wireless receiving sets now being sold are the last word in efficiency and simplicity. No technical skill, no knowledge of the Morse or any other code is required. They are as simple in use as the gramophone, but, unlike the gramophone, they convey sounds direct from the mouth or instrument of their producer to the ear of the listener. No electric light or ordinary telephone installation is necessary, and they can be used just as well in the most primitive cottage as in the most luxurious mansion.

As the technology improved and as the range of programmes increased broadcasting went from a niche pursuit to the mainstream. By 1939 most households had a wireless and radio broadcasts were a vital part of wartime life.

Das Europakonzil 2022

The Richmond in Europe Association



The Richmond in Europe Association

Promoting sporting, cultural and educational links across Europe

26th-28th September 2022. Over a hundred delegates from Konstanz, Fontainebleau, Lodi, in Italy, Tabor, in the Czech Republic & Richmond gathered in Konstanz for the third Europakonzil to address the climate emergency.



Some of the delegates in the historic Konzil

Such is the importance of the subject in Germany that delegates, including some of those from Teddington School, were interviewed on German television. Please click on the following link to see the news report.

[German TV News Report](#)

Issues like Global Warming are better addressed internationally & we can also benefit from sharing the best practices from other countries.

For example Konstanz has a fabulous network of cycle paths which are completely separate from vehicle traffic with their own bridges & underpasses. Consequently there is no school run as the majority of children cycle or walk to school.

The Oberbürgermeister has no official car, nor does his deputy. However they both have official bikes & spaces reserved for them in the town hall. Such are the trappings of office!

The youth delegates to the conference were divided into 6 multi-national groups which generated & then presented their ideas.



Leading by example. The spaces reserved in the town hall for the official bicycles of the Oberbürgermeister & Bürgermeister

These included better home insulation, more cycle paths, a reduction in single use plastic, less consumption of bottled water & the provision of urban community gardens.

REA Chairman, Alan Mockford, & Francesca Batt from environmental charity, Habitats & Heritage, formed part of the Richmond team in Konstanz.

Here they are pictured with Antonie Langemann & Maximilian Hecht who were the main organisers of the event.

The Richmond delegates & their teachers were all sixth formers from Teddington School, which has had annual school exchange for younger children with the Geschwister-Scholl-Schule in Konstanz for decades.

One of those who participated in such an exchange in the past was the world famous actress, Keira Knightley. She later returned to Konstanz to film scenes from, "A Dangerous Method."



Councillor Julia Neden-Watts & Paul Chadwick, the Director of Environment at Richmond Council, joined the conference online from England.

Richmond Council was one of the first councils in Britain to declare a Climate Emergency & it remains a top priority.

Consequently both Julia & Fran undertook to meet the Richmond delegates on their return to the UK after an unforgettable experience in our twin town of Konstanz.



The Konstanz team who planned & delivered the event

TWICKENHAM BEER AND CIDER FESTIVAL 2022

John Austin, CAMRA Branch Press and Publicity Officer

Twickenham's 20th CAMRA Beer and Cider Festival is taking place from **27th to 29th October** at a new venue, The TURK'S HEAD in Winchester Road, St. Margarets.

Organised by the Richmond and Hounslow branch of CAMRA (The Campaign for Real Ale), this normally annual event returns after a 2 year break and is eagerly awaited by large numbers of beer and cider lovers.

The 100th anniversary of the founding of the BBC is chosen as the theme this year.

Nearly 50 real ales (many from local breweries), ciders and perries are on offer. The recently awarded Champion Beer of London, Twickenham Fine Ales' "Naked Ladies" will be available, but may run out before the Festival ends!



The Festival is open daily from 12 noon until 10.30pm on Thursday, Friday and Saturday, with entry at £10 to include beer vouchers and a glass (with refundable deposit). £2 discount for CAMRA members.



Email from America

Teresa Read

In previous editions of the Tribune, we have mentioned that we have a relatively large weekly readership in the USA (500+), as well as Sweden and the odd reader from Russia ...

We are sent occasional press releases from the US and I thought this email from Dallas mentioning a new book might be of interest and can be found on Amazon.

cui bono? – who profits?

Soldiers' Blood and Bloodied Money: Wars and the Ruling Elites, Allen B. Clark.

Allen Clark is a 1963 West Point graduate and PTSD survivor who lost both legs below the knees in 1967 in Vietnam, a recipient of a Silver Star, a Purple Heart, and the Combat Infantryman's Badge.

A second Letter to the Tribune from America this week brought the Tribune's attention to Former US Congressman Ric Keller's book *Chase the Bears: Little Things to Achieve Big Dreams* where he shares his secret formula for building rapport with audiences - also on Amazon.

Traffic measures in Richmond and Bushy parks

The Royal Parks have announced they will retain measures to reduce the impact of cut-through traffic in Richmond Park and Bushy Park on a permanent basis.

This follows the completion of a two-year trial, a comprehensive park visitor engagement exercise and a detailed traffic analysis, monitoring and evaluation programme.

In Richmond Park, there will be a permanent restriction on all through-traffic between Broomfield Hill Car Park and Robin Hood Car Park and a permanent closure of the vehicle link between Sheen Gate and Sheen Cross. Additionally, at weekends and public holidays, all cut-through traffic will be restricted between Roehampton and Richmond Gates.

In Bushy Park, Chestnut Avenue will remain permanently closed to vehicle traffic between Teddington and Hampton Court Gates.

Consultation responses from across the parks indicated that a majority of respondents supported the proposals. With the closure of the roads, The Royal Parks will look to explore how the space will be repurposed, engaging with local communities and park visitors on measures that help to improve the parks.



Tom Jarvis, Director of Parks said: “As custodians of some of London’s finest green spaces, we’re

delighted to announce that the successful trials to reduce cut-through traffic in our outer parks will be made permanent. The decision is a key part of ensuring The Royal Parks is delivering on its charitable objects.

“We’d like to thank all those who have been involved in the project since it was launched in July 2020, particularly those who responded to our public consultations.

“We’re looking forward to engaging with our stakeholders and the local communities to see how we may repurpose the spaces available, now that certain roads are closed permanently to vehicles.”



FREE winter health and wellbeing clinic coming to Twickenham 17 October

Residents can benefit from a range of free services - including COVID-19 and flu jabs, blood pressure checks and fuel poverty advice - next Monday 17 October 2022 at a local winter health and wellbeing clinic.

Cold weather can make some health problems worse and even lead to serious complications, especially if you are 65 or older, or if you have a long-term health condition. Make sure you are well protected ahead of winter – please come along to find out what local services are available to help you.

Next Monday's pop-up winter health and wellbeing clinic will visit York House in Twickenham from 10.30am to 4pm. The address is York House, Twickenham, London, TW1 3AA.

The following services will be available (please note that pharmacists administering flu jabs will only be present from 10.30am to 2.30pm):

- COVID 19 jab
- Flu jab
- Blood pressure checks
- Advice on preventing and reducing your risk of diabetes, cancer, and heart disease
- Signposting to mental health support
- Tips to stay healthy and active and information about local activities that can help
- Smoking Cessation advice
- Fuel poverty advice



Anyone aged 12+ who is due their first, second, or booster vaccinations will be able to have their COVID-19 jab. The seasonal (autumn) booster is only available for those aged 50+ or those considered clinically vulnerable. Flu jabs are available for those aged 50+ or anyone typically eligible for a free flu jab. More information on the eligibility for COVID-19 and Flu jabs can be found on NHS website. All other services are open for all ages.

No appointments are required, and people can just walk in. If you have recently tested positive for COVID-19, you need to wait before getting any dose of the vaccine and the number of weeks depends on how old you are. Find out more about who is eligible via the [NHS website](#).

If anyone is hesitant about the vaccine or has any questions, the pop-up clinics are an opportunity to speak to experts from the NHS in a private and confidential environment. No booking is needed.

Cllr Piers Allen, Lead member for Adult Social Care and Health and Chair of the Richmond Health and Wellbeing Board, said: *“We are excited about the opportunity to work with local health partners to expand the services typically offered in our pop-up clinics. Not only raising awareness of the range of available services, but making these services easily accessible to our residents, is particularly crucial as we enter the cold weather season. I encourage residents to come along and take advantage of what’s on offer, to look after both themselves and their loved ones this autumn.”*

Strawberry Hill House: the perfect place to enjoy Halloween

Dare you Wake the Wizard or take a Gothic Twilight Tour?

As Halloween approaches, Strawberry Hill House invites you to explore the vivid imagination of Horace Walpole and your own...

Tucked away among the leafy streets of Twickenham, just a gigantic helmet's roll away from the River Thames, stands Strawberry Hill House, the extraordinary home built by Horace Walpole (1717 – 1797). A man of many gifts; including a career as a writer, man of letters, antiquarian and politician, he is perhaps best known for his hugely successful novel, *The Castle of Otranto*, first published in 1764.



The lurid tale begins with the dramatic death of Conrad, who is killed by the aforementioned helmet falling on him before his wedding to Isabella. His demise sets Conrad's father, Manfred, on an ill-starred journey, as he attempts to stave off the ancient prophecy, "*that the castle and lordship of Otranto should pass from the present family, whenever the real owner should be grown too large to inhabit it.*"

Walpole's book was inspired by a nightmare he experienced at his own 'gothic castle' Strawberry Hill and his fascination with medieval history. Moreover, Walpole gave the novel a subtitle 'A Gothic Story' and in so doing, created a literary phenomenon that remains popular to this day, gothic fiction.

Built in 1749, Strawberry Hill was one of the first expressions of a revival in a burgeoning taste amongst the wealthy for gothic architecture. The exterior and interior of the house reflect how Walpole was influenced by medieval castles and cathedrals. So much so that, in true gothic style, experts believe that the designs of the chimney-places were based on tombs inside Westminster Abbey.

Horace Walpole thought the House had a personality of its own, filling it with art, books and



artefacts to create the perfect setting for his visitors to experience his treasures and their stories, some of them uncanny, some of them macabre. Only by coming to the house can you feel Horace's theatrics and presence drawing you through the dramatic rooms. Even before nightfall, the house has a sense of what Horace called 'gloomth' - with the interplay of light and dark, colour and shadows.

So where better in the whole of Greater London to get you in the mood for Halloween than Strawberry Hill House?

On **26 October** gather your little ghoulies and ghosties together for *Wake the Wizard*, which begins with a super-spooky woodland walk around the spooktacular grounds of the House. Join the Good Witch, to collect all the ingredients to make a magic spell before creeping into the castle to see if you can wake, the sleeping Wizard, so he can tell you a (not too) scary story. It's even more fiendishly fun if you all dress up in your favourite costumes!

This activity starts at 5:30pm, runs for approximately 45 minutes and is suitable for little monsters aged between 3 and 7-years old.

Running on **27 and 28 October** (from 6:30 and 7:30pm on each evening) the *Gothic Twilight Tours* invite older visitors to embark on a guided walk around the birthplace of gothic horror, sharing macabre stories and enjoying a glass of fizz as you explore the haunting – and some say haunted – rooms, corridors and stairways of this, one of London's most dramatic houses.

Walpole filled Strawberry Hill with all manner of morbid curios and beautiful objects alike, some of which acquired their own gruesome histories. Not least is the beautiful Chinese porcelain jardiniere, in which Walpole's favourite cat, Selima, drowned while trying to catch goldfish. Each tour lasts approximately 75 minutes and, as Horace once said: "*With a Gothic House, all you need to bring with you is your imagination, and the House will do the rest!*"

For more information and to book tickets for *Wake the Wizard* or one of the Gothic Twilight Tours visit www.strawberryhillhouse.org.uk



STRAWBERRY HILL
House & Garden

Richmond Artisan Market

Richmond Artisan Market is open all weekend Saturday and Sunday until 4pm in Heron Square by Richmond Riverside.

We've got fantastic street food that you can eat with us inside the market, on Richmond Riverside or take home.

We also have food, craft and gift stalls all run by local, ethical small businesses. We would love for you to join us, you could even start your Christmas shopping!



EVERY
SATURDAY
AND
SUNDAY

11 TIL 4
10.30 TIL 4

Richmond Artisan Market
Heron Square, Richmond, TW9 1EP
what 3 words:///gives.clay.influencing

local / ethical / sustainable / arts / craft / food /
gifts / good coffee / plastic free / the best
streetfood / friendliest traders / riverside walks /
people watching / small businesses love ...

DUCKPONDMARKET.COM

duckpond market

London Luminaries Lectures series

This series of 14 talks will explore how food was produced and consumed in the past, and discuss the heritage of food and drink across West London.

The Thames west of London has been the resort of royalty, aristocrats, artists, writers and wealthy property owners for centuries. As well as building elegant villas, they developed gardens which provided a feast for the senses and supplied food for the table. In our own times, issues of the sustainability of food production and equity of its distribution are hot topics.

In this series of 14 talks, explore how food was produced and consumed in the past by Luminaries to help inform discussions on the future of food and drink. Much food was produced locally; great houses such as Chiswick House and Fulham Palace had their own kitchen gardens and Alexander Pope boasted of the sources of his meat supply:

*'To Hounslow Heath I point, and Banstead-Down,
Thence comes your Mutton, and these chicks my own.'*

Yet modern luxuries such as tea and coffee stretched supply chains around the globe. Wining and dining also provided hosts with opportunities to display their hospitality and particular taste through the choice of menu and table setting.

This varied banquet of 14 talks will thus also explore cultural dimensions of food and drink and runs from **Wednesday 5 October to Thursday 17 November 2022**.

Visit [Food and Drink talks page](#) to book all talks and in doing make a donation to the 14 sites that are covered during the series including Orleans House Gallery, Turner's House or Marble Hill House.



Join us for the first ever Sheen Market Day!

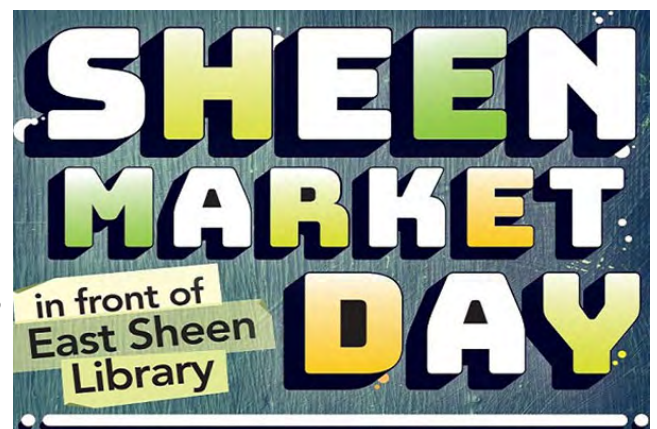
Don't miss our first Sheen Market Day outside East Sheen Library this Saturday.

The very first Sheen Market Day will be taking place this **Saturday 15 October** outside East Sheen Library between 11am and 6pm.

This brand new outdoor event will have live jazz bands on stage, delicious street food, craft beer, and arts and craft stalls.

There will also be a host of children's activities including a fabulous giant bubble show, face painting, and plenty more to keep the little ones entertained.

Come and join us for this brand new initiative in East Sheen!



Safe Space Richmond extended to give support to residents at the weekend

Following the success of the Safe Space by Richmond Station, the initiative has been extended to provide vulnerable people support on the weekend as the nights get darker.

As the marquee has garnered a significant positive response from the public as well as several successful police interventions, it will continue to serve residents this autumn.

Launched by Richmond Council and staffed by Community Police, British Transport Police, council workers, Street Pastors and volunteers, the marquee can give support to anyone out during the evening who may be feeling vulnerable. The police are on hand to intervene where necessary and visitors are also able to find information on White Ribbon, domestic abuse services and the Railway Guardian app.



The space is accessible between **9pm and 1am on Friday and Saturday** nights at Richmond Train Station.

It can be found in the pedestrian area outside the station and located near to the bus stops linking the station to other parts of the borough, providing anyone a safe place to wait for their lift home.

Help Improve habitats through nature conservation tasks

Learn about the natural world that's at your doorstep!

Join Let's Go Outside and Learn at Ham Lands each Monday from 1 to 3pm and help improve habitats for wildlife through practical conservation work.

Learn about the natural world that's at your doorstep, meet new people and make new friends.



No experience is necessary and everyone is welcome, although under 17s will need to be accompanied by an adult.

They will be meeting on Riverside Drive in Ham by the zebra crossing at the end of the path that leads to Teddington Lock Footbridge each week until 19 December.

Please register by emailing gaby.docker@lgoal.org.uk or outdoor.learning@outlook.com.

Come and have a chat about your health

The 'Come and have a chat about your health' bus will visit **Tesco in Teddington on Tuesday 18 October and Ham and Petersham SOS on Wednesday 19 October** to answer your health questions.

The bus will be parked at the following addresses and times:

- Tuesday 18 October - Tesco 20-28 Broad St, Teddington, TW11 8RF from 12noon to 5.30pm
- Wednesday 19 October - Ham and Petersham SOS, Back Lane, Richmond, TW10 7LF from 10am to 4pm

If you have a question about your health, or on behalf of your family or friends, visit the health bus to get it answered.

A local pharmacist will be available to offer advice on a range of different areas including:

- Tips to stay healthy and active
- Accessing free NHS health checks for 40 to 74 year olds
- Help to stop smoking
- Preventing and reducing your risk for several diseases, including diabetes, cancer, and heart disease
- Immunisations for you and your family
- Information about the COVID-19 vaccines

NHS staff will be on hand to give you the COVID-19 vaccination if you haven't yet had it, as well as the booster dose.

And if you have any questions or concerns about the vaccine, you can come along and have a chat about it, with no pressure to get the vaccine.



OCTOBER FOOD AND DRINK NEWS

There's a definite nip in the air now, and the trees are turning the most glorious colours. As the evenings draw in, our appetites change, so here are a few suggestions of some new products that have caught my eye recently, and are perfect for some autumnal foodie enjoyment:



Orange wine may seem like a trendy topic, but it's actually an ancient way of making wine, first practised in Georgia over 4,500 years ago. **Gérard Bertrand's Orange Gold** wine has a lovely orange hue and just bursts with aromatic freshness. Launched in the UK last month, this organic wine is a blend of Chardonnay, Grenache Blanc and Viognier to give the wine body, and the addition of Marsanne, Mauzac and Muscat bring a distinct aromatic note. The wine's left in contact with the grape skins for added complexity and its striking orange colour. Expect layers of peach, pear, flowers, lemon and ginger. With its light tannins and subtle acidity Orange Gold is fab with so many dishes - or a perfect apéritif - but also complements spicy cuisine. Do check it out, it isn't cheap, but it's worth it for a special occasion. Available from Ocado and Majestic at around £18 a bottle.

To be honest, I've never been much of a fan of pork scratchings (I value my teeth too much) But now I've discovered **Robert's Dorset Proper Pork Crackling**, I'm such a convert!. Triple cooked for extra crunch, it's a really light snack, and available in 11 tasty flavours. These include Lightly Salted for the safe-players, but Garlic Sage & Onion or Sweet Chilli for those after something a little different, or Extreme Naga Chilli for the downright daring! The company also



produces the most fabulous nuts: peanuts and cashews, in a delicious range of flavours. Sadly they aren't as yet that widely available, but I would urge you to check out the website and order some online. They are reasonably priced and available in a range of pack sizes. You can buy gift boxes too, at £17.50, and there's subscription service at robertsdorset.com

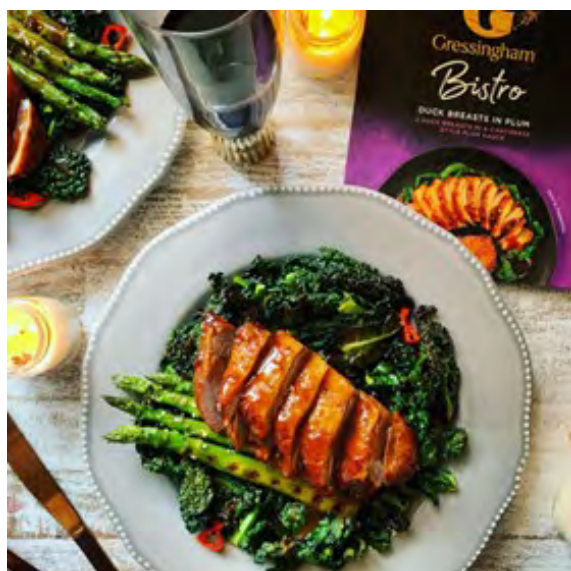


Tofu is one of the most versatile and healthy food products - soybeans and water. A great storecupboard standby from **Tofu Tasty** is its newly launched **Craft Tofu Knots**. Simply soak or boil, then add to a host of different recipe applications, including coating then frying. Dried Tofu is a relatively unknown ingredient in the UK, but considered a delicacy in China and Japan. **All-natural**, nutrient-rich, **gluten-free, vegan**, it's plant-based and **boasts 45% protein; higher than any fresh meat**. Tofu knots are made from the top layer of soy milk that has been dried and hand-twisted into various shapes - somewhat similar to pasta. This dried tofu has a more intense flavour than fresh tofu - creamier and more savoury - the knots are chewy and flaky, and great for those who want some bite from tofu. £3.40 from Waitrose, for a box of culinary versatility.

If you're looking for an easy way to add flavour to your tofu, meat, pasta or anything, these **Mr Organic Flavour Pastes** are another fab cupboard standby. Super tasty, they make a base for an autumn stew, a pizza, adding to mayo for a dip - you name it, they'll flavour it. They're fab spread on sourdough toast, then topped with poached or scrambled eggs and try spreading them on bruschetta or ready rolled puff pastry to make delicious canapes in a trice! Three varieties are available:



Tomato & Garlic; Tomato & Pepper and Tomato & Vegetable. Made with organic tomatoes, the pastes have no added sugar and reduced salt so are healthy too! From Ocado rrp £2.20



Gressingham Duck's Bistro range of oven-to-table dishes are easy to cook and delicious to eat. Ready in just 40 minutes or less, the Bistro range includes classic dishes such as Duck a l'Orange, Confit Duck and Duck Legs in Plum Sauce, as well as more unusual combinations such as Duck Legs in Cherry Hoisin Sauce and Duck Legs in Orange & Maple. Just pop in the oven and serve with simple accompaniments such as noodles, potatoes or seasonal veg – what could be simpler? Or, for a tasty treat the whole family can enjoy, try **Gressingham's Crispy Aromatic Duck**. Choose from a Whole or Half Crispy Duck with Pancakes and Hoisin Sauce for a quick-to-prepare, and really fun weekend treat that you can share. Gressingham's range of crispy duck and Bistro Duck meals are available, from around £6, at Sainsbury's, Tesco, Morrisons, Waitrose and Ocado. For more

information visit gressinghamfoods.co.uk

Fancy a good curry to warm you up? Well, instead of pairing it with beer, wine or cider, do try **Sollasa**. A lower alcohol alternative to gin, it's in fact a natural grain spirit, bottled at 20% ABV - half the alcohol content of most gins. What's more, it's been designed with input from leading chefs, mixologists and food scientists especially to complement the unique flavours of Indian cuisine. It's zesty, citrus, but has plenty of botanicals and a gentle saline note. It makes a great midweek alternative to a G&T but also a fabulous accompaniment to an Indian meal. I'm told the inspiration for the name comes from 'Manasollasa', an encyclopaedic 12th century Sanskrit text, considered the first Indian recipe book. Already awarded a bronze medal in the IWSC 2021 Spirits Awards, Sollasa was founded by Vishal and Sajag Patel, who wanted to answer conclusively the question perpetually asked in Indian restaurants: what's best to drink with Indian food?



It's available in 70cl bottles (£29 RRP) Sollasa and Tonic 'ready-to-drink' can, 330ml, 6% ABV (4 pack for £12, RPP) Or perhaps try the Sollas Taster Box (x 2 Sollasa 5cl, x 2 London Essence Tonic Water, 5cl for £10 RRP). Available from sollasadrinks.com and Master of Malt. It's also available at select Indian restaurants across the UK, including Michelin-starred restaurants Gymkhana and Trishna, Cricket and Atul Kochar's Masalchi.

Twickers Foodie – By Alison Jee

SPIRIT OF CHRISTMAS FAIR - AND YOU COULD WIN TICKETS!

I'm delighted to report that one of my favourite fairs is back! Celebrating 21 years, the **2022 Spirit of Christmas Fair** is supporting over 700 small independent brands and designer-makers this year, handpicked for quality and originality and approved by House & Garden Magazine. From **31 October – 6 November at Olympia London** visitors can discover over 200 new and exclusive brands to the Fair as well as hundreds of returning favourites. Many returning visitors (like me!) treat the Fair as an annual unmissable social calendar date, and enjoy a wonderful experience with friends, kick-starting the festive season.



There's something for everyone within the cornucopia of inspirational boutiques selling: homeware, fashion for both men and women, baby & child, decorations, health & beauty, food & drink and jewellery. From grand, show-stopping pieces to the quirky and beautiful, shoppers will find endless never-before-seen items across the seven days. You can meet face-to-face with brands that can't be seen elsewhere, because many are only accessible online, but use the Fair as their only consumer touch point.



And as someone who helped judge the **Great Taste Awards** this year, I'll be checking out the winners in the Gallery Food Hall. Bursting with delicious festive essentials, you can discover over 100 of the finest artisan producers including Great Taste Award winners, it's sure to inspire you for festive feasts and foodie gifts. More information and ticket information can be found at spiritofchristmasfair.co.uk

WIN A PAIR OF TICKETS TO THE FAIR!

We've negotiated a pair of tickets to the Spirit of Christmas Fair (worth £55) To enter, just send an email to contact@twickenhamtribune.com with the heading Spirit of Christmas. Tell us which champagne has bars at the fair and give us your telephone number. Closing date is noon on Friday 21 October. The winner will be notified the following week.

The judges decision is final, no correspondence will be entered into and there is no cash alternative for the prize.



Lucia di Lammermoor : Preview

Instant Opera at Normansfield Theatre, Teddington 14th – 16th October

Opera critic Thomas Forsythe discusses the forthcoming production of Donizetti's *Lucia di Lammermoor* with Instant Opera's Nicholas George

TF: Scotland has been a momentarily topical place during the last month. Donizetti's opera about aristocratic families set in a Scottish stately-home seems almost like a tribute to Queen Elizabeth, whose last days were spent in just such a place. Clearly, it is fortuitously so, as I imagine you have been planning *Lucia di Lammermoor* for some considerable time.



NG: Yes, our production was originally planned for October 2020. Pestilence, war, climate change, political and economic turmoil, have all happened since, not that anyone needs reminding. The tribulations of two ancient feuding Scottish families depicted in this melodrama seem almost sane in comparison!



Valeria Perboni

TF: I hear there is a new Stage Director for this production, Valeria Perboni from Mantova in Italy, whom you discovered at l'Arena di Verona. That sounds very exciting.

NG Valeria is a real find. She was originally a new member of our chorus, but there were clearly more strings to her bow. Consequently, I asked her if she'd like to take over the reins as Stage Director for *Lucia*, to which she responded she'd love to but would need to finish directing *Turandot* at the Arena di Verona !!

TF: Your cast is a very international one. You have clearly been finding exceptional singers, but does this present logistical problems for a small company?

NG: One of the joys of Instant Opera is the phenomenal range of talent we've been able to attract. It can present many challenges as, not surprisingly, they zip around the world for concerts and auditions. For *Lucia* we have brought to Teddington two fabulous casts that include artists from four continents, including from both Russia and Ukraine – music brings people together.

TF: It sounds like we should get along to [Normansfield Theatre in Teddington](http://www.normansfieldtheatre.co.uk) during the middle weekend of October for a real treat. We look forward to a great opera, with top-notch performers, all without bagpipes!

Read Thomas Forsythe's full preview at www.markaspen.com/2022/10/09/lucia-lam-prev

Photography courtesy of Instant Opera



The Caucasian Chalk Circle

by Bertolt Brecht, adapted by Steve Waters

Rose Original Productions at The Rose Theatre, Kingston until 22nd October

Having its roots in the biblical story of two mothers claiming before King Solomon that each was the real mother of an infant son, how the dispute is resolved is the basis of *The Caucasian Chalk Circle*. This version relocates Brecht's story from warring Soviet communes to a modern-day refugee camp, where an itinerant singer invites the refugees to create the Chalk Circle, a story within the story.



Director, Christopher Haydon advocates epic theatre, *The Caucasian Chalk Circle* being archetypical of the genre. The audience

is never allowed to remain passive, never to confuse what is seen on stage with reality. Its success depends on the actors' ability to caricature the outlandish characters they are portraying. This troupe of actors are brilliant in fulfilling the demands made on them, including dancing and singing, mime and mimicry.

Music is particularly important in this production, where it is narrative driven. Composer, Michael Henry creates echoes of folk songs or the tonal rhythms of the human voice; pure magic. Zoe West, as the guitarist, singer and narrator is superb. A strong, physical actor with great stage presence, she draws us into her spell.

There are so many outstanding performances in this production. However, Grusha, the young maid who, at great danger to herself, saves a baby from imminent death, is the one role in the play closest to realism, and closely represents the concept of truth. In her acting and her vocal singing prowess, Carrie Hope Fletcher gives a memorable performance.

Throughout *The Caucasian Chalk Circle* your mind is active, reflecting, asking questions. There is much in this production to admire, to laugh at, to ponder upon, to feel outraged, to be moved by. What kind of wisdom is needed after a war is over, and how do people stay true to their humanity when they have no resources left – situations we are only too aware of in our troubled times.



Read Celia Bard's review at www.markaspen.com/2022/10/07/caucasian-chalk-o

Photography by Iona Firouzabadi



The Marriage of Figaro

by Wolfgang Amadeus Mozart, libretto by Lorenzo Da Ponte

Glyndebourne Festival Theatre until 28th October, then on tour until 24th November

The Marriage of Figaro was written as a comedy, and has been interpreted in various ways. Michael Grandage's 2022 Glyndebourne production leans more towards light humour, with lesser elements of class warfare and feminist undertones. A 1970s "flower power" aesthetic flows throughout the performance – Count Almaviva seems to be smoking a spliff -and in many ways this works very well. Particular highlights came in surprising juxtapositions between Mozart's music and this mood. The cast dance in a particularly 1970s way; anachronistic, but perfectly to the tempo and rhythm of Mozart's music.



The music and vocals performances are, of course, vital elements and Glyndebourne delivers in spades. Stephanie Childress prodigiously handles the orchestra, ensuring they have a consolidated sound and a clear vision. Only in her early twenties, one has to wonder how far she and her talents will go.

Alexander Miminoshvili gives us a charismatic Figaro with an unassailable stage presence, his warm and confident tone echoed in his portrayal. Soraya Mafi is a slight Susanna, but her soprano is anything but slight. Her supple and flexible tone is clearly a crowd-pleaser.

George Humphreys as Count Almaviva has an aristocratic haughtiness about him, with a convincingly grovelling turnaround at the end, and his baritone passes from seductive, to angry and then revelatory. But my personal favourite has to be Nardus Williams as a touchingly sincere Countess Almaviva. Her voice carries with a mellifluous warmth and directness, like sunlight through flowing honey.

Ida Ränzlov as Cherubino is particularly entertaining as the hormonal teenage boy, flirting with every female and constantly trying it on with them all, restless as a pent-up dynamo. I wished for more stage time for Henry Waddington as Bartholo and Madeleine Shaw as Marcellina, who are real vocal and performative delights.

Glyndebourne promised a new interpretation of *The Marriage of Figaro*, that's exactly what it does – provides an unexpected but pleasing modern flourish.



Read Eugene Broad's review at www.markaspen.com/2022/10/11/marriage-figaro-glynd

Photography by Richard Hubert Smith ©Glyndebourne Productions Ltd.



Dead Man's Cell Phone

by Sarah Ruhl

Network Theatre, Waterloo until 15th October

Dead Man's Cell Phone has as its title the premise of an original and intriguing story. It opens in a café, where a man is slumped dead at one table. Jean, at the next table, goes over to answer his phone. This action bonds her for good with the very recently deceased Gordon, making grounds for unravelling a very human situation.

Jean, played by Hannah Dormor, has her work cut out, as she has the dilemma of claiming that she knew Gordon very well. Jean carries her pretence to a meeting with his "other woman", strongly played by Naomi Bowman, but then faces the grim prospect of a meal with Gordon's mother, wife and brother.

Being too polite to tell them she is a vegetarian gives a great insight into Jean's character.

Searching for clues along the way as to why his steak-eating family were contemptuous of his occupation, we get to know the late Gordon. The manipulative mistrustful matriarch is played by Elizabeth Gartside, who worked well with Hermia, Gordon's widow, a convincing role played by first-time actor, Bianca Monteriro, comfortably taking the stage as a strong presence.

Gordon's brother, Dwight, dynamically played by Dan Carter, shares an empathy with the hapless Jean, and the scenes between them were highly watchable.

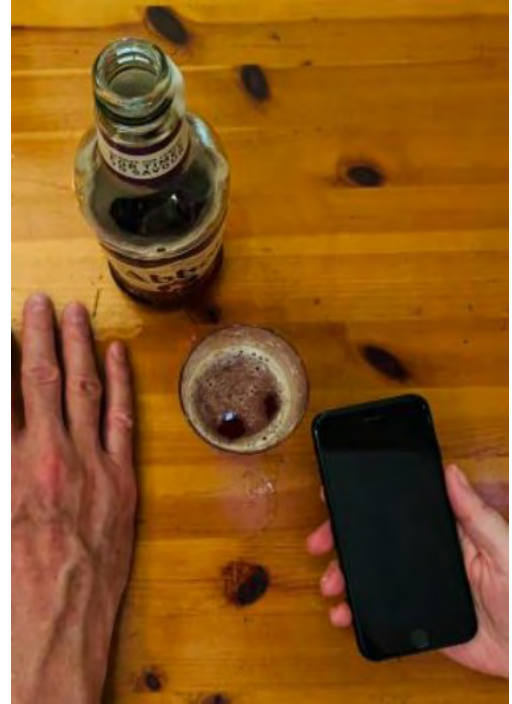
The second half features Gordon's side of the story, and Alain English comes into his own as his tale is revealed ... and his character laments the lack of lobster bisque in the café where he met his doom!

Gaja Gasiorek, clad all in white, makes a moving focal point with superb singing set against background music by sound designer Thomas Cheeseman, which keeps the tension nicely going, and the lighting designer Paul Evans makes it aptly moody.

Dead Man's Cell Phone explores how, in our tech-savvy world, we can be equally united and divided by a mobile phone.

Read Heather Moulson's review at www.markaspen.com/2022/10/13/dead-man-phone

Photography courtesy of Network Theatre Co.



TRAVELLER'S TALES 133

RETURN TO FRANCE PART 2

Doug Goodman visits Normandy

The 160 miles drive from St. Omer in Northern France to the Normandy Coast was really smooth. The D928 to Abbeville and then the toll auto-routes were almost empty and with a surface that puts our own motorways to shame. To get to Normandy I had considered taking a ferry from Portsmouth or Poole to Le Havre or Caen but the DFDS service from Dover to Calais allowed a short break in the historic town of St. Omer and a chance to stay with friends.

COASTAL RESORTS

Etretat on the coast between Dieppe and Le Havre was packed with visitors on a sunny Sunday in late September. This made parking very difficult but fortunately the Dormy House Hotel offered ample free parking as well as a splendid view over the resort from its hill-side location. Etretat is famous for its two rock formations – Falaises d'Aval and d'Amont nestled between the cliffs which surround the bay. Each has been fashioned into spectacular shapes by the wind and sea to form arches. Once a tiny fishing village it gained popularity in the 19th century and was much loved for its light and sea views by the Impressionists who produced so many beautiful paintings.

The work by Monet showing the beach and cliffs of the Porte d'Amont is breath-taking. A steep climb to the chapel and gardens can be avoided by taking the land-train from the town centre. On the headland there's a tiny chapel, a memorial to airmen who were attempting a trans-Atlantic flight in 1927 and a rather curious garden. The only colour on this sloping space is green. All the shrubs and plants are one colour and amongst them are sculptured faces representing rain drops. Closely clipped topiary follows the contours of the hill and creates a calm and soothing atmosphere. Mediaeval, half-timbered buildings along with Belle-Epoque villas are dotted around the town. There's a good choice of sea-front restaurants overlooking the shingle which offer a perfect view of the sunsets so often painted by The Impressionists.



Etretat by Monet



Etretat View



Gardens at Etretat



Etretat Rock Formation

An hour by road from Etretat to Honfleur took us around Le Havre and over The Seine on a spectacular, space-age bridge, the Pont de Normandie. Opened in 1995 the bridge has a span of 2,800 feet and for a time held the record for the world's longest cable-supported crossing. Honfleur has a long maritime history going back to the 11th century. The pretty, old harbour, the Vieux Bassin, provides moorings for colourful yachts with waterside restaurants giving diners a grand view of the boats' activities. Honfleur also has a large international port where liners disgorge their passengers for visits to the town and local sites. Cobbled streets, the typical half-timbered houses and intriguing little shops attract visitors. The Eglise Ste Catherine is the largest wooden church in France and replaced a building destroyed in

the 100 Years' War. Its bell tower stands alongside. Like Etretat, Honfleur attracted painters and many great works from the 19th and 20th centuries are displayed in the Musee Eugene Boudin including Monet. Monet was not the only artist drawn to the Seine Estuary: Turner, Corot, Courbet and many others found the unspoiled, mediaeval town and attractive countryside provided inspiration for their masterpieces.



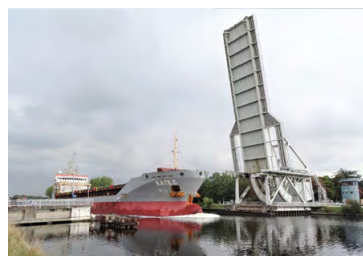
Honfleur



Honfleur Church

D-DAY

Travelling west on Normandy's north coast it's difficult to miss the WW2 D-Day landing beaches. Five major beach-heads were established on June 6th 1944 where the Allies put ashore tens of thousands of men and vehicles in the first stage of the liberation of France. But just hours before the beach-heads were secured, a daring attack by paratroops of the British 6th Airborne Division on the bridges over the river Orne at Ranville and Benouville took place. Horsa gliders landed within yards of the vital bridges to prevent enemy reinforcements crossing over to halt the advancing Allied forces. The German defenders were taken by surprise. The bridges were captured and held until troops from the landing at 'Sword' Beach relieved the British defenders. Beside the main bridge, which was named Pegasus in recognition of the 6th Airborne Division's badge – the winged horse Pegasus, is a famous restaurant visited by veterans and tourists. The Café Gondree established in 1934, by the parents of the present owner Arlette Gondree, was the first house in France to be liberated. She was four in 1944 and still serves visitors with delicious local dishes and recounts stories of the war and life after the liberation. Across the canal is the Pegasus Memorial Museum where the history of the battle for the bridges is well documented. A display of weapons, vehicles and uniforms along with a reconstructed glider and the original bridge bring to life one of the most significant events of D-Day. At Ranville is the British cemetery where over 2,000 soldiers, who fought to give this tiny part of France its freedom, are laid to rest.



New Pegasus Bridge



Original Bridge at the Museum



Original Bridge at the Museum



Pegasus Bridge Museum

In the last feature, which mentioned the 39-45 Museum at Ambleteuse in the Pas-de-Calais, the new website is www.musee3945.com

Dormy House Hotel in Etretat: www.dormy-house.com Pegasus Bridge Museum: (entry €8) www.musee-memorial-pegasus.com/en DFDS Ferries: www.dfds.com Normandy: www.en.normandie-tourisme.fr

WIZ TALES: Iran

Teresa Read



This week the BBC reported that protests are continuing in Iran, sparked by the death in custody of 22-year-old Mahsa Amini, arrested for breaking hijab rules.

Iran was known as Persia until 1935 and on 1 April 1979 Iran became an Islamic Republic.

The name Iran is derived from the Aryan, or Irani, tribes; also known in the past as Persia, a name derived from the ancient province of Persis, the home of the Parsa people.

Early agricultural communities began to appear in Iran in the eighth millennium BC. Elam, in south-west Iran, was one of the earliest civilisations.

Cuneiform writing, a form of picture writing, was used in Iran over three thousand years ago; the Cylinder of Cyrus the Great was inscribed with the first known declaration of human rights.

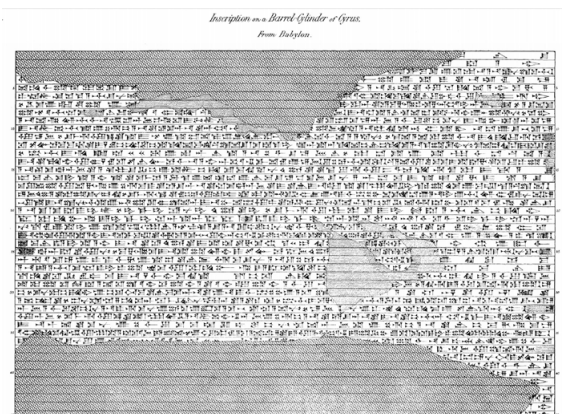
There are many interesting facts about Iran. For instance, King Darius built the longest road (1,500 miles) in the 5th century to facilitate communication; postmen could make a journey along the road in six to nine days instead of three months.

Ibn Sina (980-1037), born near Bukhara, was a Persian philosopher and physician. Known in the West as Avicenna, he wrote the Book of Healing and the Canon of Medicine. The Canon of Medicine, the most famous book in the history of medicine, was widely used by western physicians.

Omar Khayyam (1044-1123), a mathematician and astronomer as well as a poet, is perhaps the best-known Iranian poet in the West.



Persian Leopard



More information about Iran: <https://worldinfozone.com/country.php?country=Iran>

Red Roses name matchday squad to play France in Pool C Rugby World Cup match

Head coach Simon Middleton has named his England Women matchday squad to play France in Saturday's (15 October) Pool C Rugby World Cup match at Northland Events Centre, Whangarei – kick-off 8pm local time/8am UK time and live on ITV.



Sarah Hunter captains the side at number 8 and is set to earn her 137th cap and become the joint most-capped England international drawing level with Red Roses prop Rocky Clark.

Flanker Marlie Packer returns to the squad at openside flanker in the only change to the matchday 23 who secured an 84-19 victory over Fiji in their tournament opener at Eden Park last weekend. Gloucester-Hartpury's Alex Matthews is blindside flanker, vice-captain Emily Scarratt is at outside centre while Leanne Infante continues at scrum half. Abbie Ward and Zoe Aldcroft are the lock pairing.

Fresh from her four-try display against Fiji, Claudia MacDonald continues on the left wing, with Lydia Thompson and Ellie Kildunne making up the back three at right wing and full back respectively. Vickii Cornborough (loose-head prop), Amy Cokayne (hooker) and Sarah Bern (tight-head prop) are an unchanged front row. Zoe Harrison and Helena Rowland form the 10-12 axis. Gloucester-Hartpury duo Connie Powell and Maud Muir are finishers alongside Hannah Botterman, Cath O'Donnell, Poppy Cleall, Lucy Packer, Holly Aitchison and Abby Dow.

Middleton said: *"The opening weekend at Eden Park was a special event to be a part of. World Cups are huge occasions and it doesn't matter how many caps you have or how many games you've played nerves can come into play and we saw that a little bit with us last week. I was delighted with the way the team problem-solved and performed after half-time. It showed great character."*

"Our aim was always to field a consistent side for our opening two matches. The wider squad are all aware of the situation and what they need to do to earn their place. As a coaching group, we know it's far easier to play than not play in competitions but that doesn't diminish anyone's role, the part they play or the responsibility they hold. Whatever we achieve will be down to the squad not the team. We arrived as a 32 and we stand or fall as a 32."

"France always present a huge challenge and this time it will be no different. They have a new-look coaching set-up since we last played and we look forward to another big test and what I expect to be a close contest."

England matchday squad to play France

15. Ellie Kildunne (Harlequins, 26 caps)
14. Lydia Thompson (University of Worcester Warriors, 55 caps)
13. Emily Scarratt (VC; Loughborough Lightning, 104 caps)
12. Helena Rowland (Loughborough Lightning, 18 caps)
11. Claudia MacDonald (Exeter Chiefs, 21 caps)
10. Zoe Harrison (Saracens, 41 caps)
9. Leanne Infante (Saracens, 53 caps)

Finishers

16. Connie Powell (Gloucester-Hartpury, 6 caps)
17. Hannah Botterman (Saracens, 31 caps)
18. Maud Muir (Gloucester-Hartpury, 12 caps)
19. Cath O'Donnell (Loughborough Lightning, 21 caps)

1. Vickii Cornborough (Harlequins, 71 caps)
2. Amy Cokayne (Harlequins, 65 caps)
3. Sarah Bern (Bristol Bears, 47 caps)
4. Zoe Aldcroft (Gloucester-Hartpury, 33 caps)
5. Abbie Ward (Bristol Bears, 57 caps)
6. Alex Matthews (Gloucester-Hartpury, 52 caps)
7. Marlie Packer (Saracens, 84 caps)
8. Sarah Hunter (C; Loughborough Lightning, 136 caps)

20. Poppy Cleall (Saracens, 58 caps)
21. Lucy Packer (Harlequins, 6 caps)
22. Holly Aitchison (Saracens, 11 caps)
23. Abby Dow (Wasps, 25 caps)

“The RFU’s Club Financial Viability Group has met this evening and confirmed that Wasps are suspended from the Gallagher Premiership Rugby League.

“We appreciate this is a very difficult time for Wasps players, staff and supporters who will be concerned at news that the club is likely to enter administration. The RFU will continue to work with the club, PRL and any potential administrator or future investors to find the best possible outcome for the club.”

For background:

- Wasps will need to reapply for the suspension to be lifted if they are able to demonstrate the means and commitment to pay rugby creditors.
- From a regulatory perspective Wasps FC (women) may continue to operate as they are a separate entity and have a separate registration with the RFU. The men’s club have been providing funding towards wages and other support and therefore Wasps FC will need to establish a funding stream to support the continued operation of the team.

Match Preview: Crewe v Brentford B

Young Bees in action in behind closed doors fixture

Written by [Brentford Football Club](#)

Brentford B will face Crewe Alexandra on Saturday 15 October in a 12pm kick-off. The match will be played behind closed doors.

The young Bees go into the game unbeaten in five matches and were last in action against Queens Park Rangers Under-21s where they came away with a 2-2 draw following goals from Tony Yogane and one of the Brentford Trialists.

The opposition

Crewe compete in Sky Bet League Two and are in action on Friday night against Tranmere Rovers away from home. Their previous two results saw them pick up draws against Gillingham and Carlisle United as they currently sit 13th in the division. In charge of Crewe is Alex Morris and the 39-year-old is in his first senior role having worked within the club’s Academy system with the Under-18s. He went on to take the first team management role last season on an interim basis before taking the job permanently in late April this year. B Team forward player Lachlan Brook, who has been on loan at Crewe this season, could well feature for the side when they face Tranmere on Friday evening.

Last time out

There were positives to take from the Bees’ last outing against QPR at Jersey Road. The side went ahead with a close-range finish from one of the Trialists before QPR levelled just before the break. Tony Yogane’s first goal for the B Team had the side back in front before our West London neighbours levelled to earn a draw.

Match Coverage

We will have match updates across social media, as well as a report following the game. We will also provide match reaction from B Team Head Coach Neil MacFarlane and his players.



Brentford Women's First Team progress in League Cup

Bees comfortably beat Newhaven Ladies 2-0

Written by [Brentford Football Club](#)

A wonder strike from Nikki Saunders and a second half finish from substitute Eleonora Cottrell saw Brentford Women's First Team proceed to the Second Round of the League Cup. The Bees were keen to start well after conceding within the first 15 minutes in their last outing and they did exactly this with Chloe Logie pressing high up the pitch causing the away team's back line discomfort.

Chloe Webb and Nikki Saunders were linking up well on the left flank with Saunders getting in behind Newhaven right back, Jess Mead, several times in the opening stages of the game.

Nadia Peters came inches away from opening the scoring on 20 minutes after Webb delivered a brilliant cross to the far post, but the right back was not able to direct her header goal bound.

Logie looked most likely to score for the hosts with the Brentford number nine forcing a great save from the away team's keeper, Annie Hills, after her shot from 18-yards looked destined to find the bottom corner.

Despite the constant pressure from the Bees, they struggled to create any real goal scoring opportunities in the opening half an hour of the game.

However on 43 minutes the home team made their breakthrough after an exquisite strike from left winger, Saunders.

The number 12 picked up the ball from 25 yards before taking on two players and smashing the ball into the top right corner leaving the Newhaven number one with no chance.

The Bees came out of the second half filled with confidence and nearly made it 2-0 three minutes after the break.

Saunders was at the heart of the move again as she found Sophie Troth in between the Newhaven centre backs and the number 10's brilliant first-time pass to Logie left the striker through on goal. Hills kept her side in the game with a strong save, however, with Logie left disappointed that her strike didn't find the back of the net.



AMBULANCE STRIKE: GMB REVEALS BALLOT DATES FOR ALMOST 20,000 WORKERS ACROSS TRUSTS IN ENGLAND AND WALES

Cuts and shortages mean GMB members feel they are unable to deliver safe standards of patient care

GMB Union has announced industrial action ballot dates for more than 15,000 ambulance workers across 11 trusts in England and Wales for strike action.

Ambulance workers from London, East of England, East and West Midlands, North East, Yorkshire, North West, South Central, South East Coast, South West and Wales Ambulance trusts will take part in the strike vote.

Thousands more NHS workers will also be balloted across other NHS trusts, with more votes set to follow.

The ballot opens on 24 October and closes on 29 November, and any potential strike action could take place before Christmas.

The strike ballots follow consultative votes across all the trusts in which workers voted strongly in favour of strike action.

Workers are angry over the Government's imposed 4 per cent pay award, which leaves them facing yet another massive real terms pay cut.

Rachel Harrison, GMB National Officer, said:

“Ambulance workers have just had enough.

“They've not been on strike in decades, but they are at the end of what they can take.

“Pay has been systematically slashed for more than ten years and we now face the worst cost of living crush in a generation.

“Meanwhile vacancies are at record highs and we have the worst A&E delays ever - and it's not even the winter flu season yet.

“But this is about more than pay and conditions. Cuts and shortages mean GMB members feel they are unable to deliver safe standards of patient care.

“Things can't go on like this - something has to give.”



Introducing Integrated Care Systems: joining up local services to improve health outcomes

The introduction of Integrated Care Systems (ICSs) has been broadly welcomed, but the wider service and financial pressures faced by the NHS and care providers pose significant risks to ICSs' ability to focus their attention and resources on local priorities, according to the National Audit Office (NAO).

ICSs are the latest in a long line of restructures by the Department of Health & Social Care (DHSC) aimed at improving health outcomes and efficiency by joining up health and care services. Their introduction is widely supported by stakeholders, unlike the previous set of major reforms in 2012. The NAO's survey of key stakeholders found that 76% support the introduction of ICSs. NHS England (NHSE) consulted extensively in designing and implementing ICSs, by first testing and then refining its plans in response to feedback.

However, this restructuring comes at a time of intense pressure on the NHS and its partners. NHS and social care providers have high levels of staff vacancies, and in 2019-20, the year before extraordinary financial arrangements were put in place in response to the COVID-19 pandemic, around a quarter of both NHS trusts and Clinical Commissioning Groups (CCGs) overspent their budgets. Local authorities are facing increasing demand for care services while local government spending power reduced by 26% between 2010-11 and 2020-21. These challenges have been further exacerbated by the pandemic which continues to put pressure on the NHS.

NHSE and DHSC have recognised that efficiency targets must be realistic. The scale of savings targets facing some ICSs will require even more effective partnership working to find and sustain efficiency gains. In this financial year, ICSs across England must make savings of £5.7 billion (equivalent to 5% of their budgets) to balance the books, and will then need to maintain this lower level of spending.

NHSE has asked ICSs to take a long-term approach focused on preventing ill health, but the targets it has so far set for ICSs are about short-term improvements, principally elective care recovery. NAO case study interviewees reported that NHSE's scrutiny of them so far has focused on financial management and tackling elective care backlogs, with prevention rarely mentioned. NHSE has allocated £97 million across all 42 ICSs for efforts to improve prevention and an additional £200 million for tackling health inequalities, compared with £2 billion to tackle elective care backlogs. NHSE commissions prevention services including immunisation and screening programmes at national and regional levels. These programmes cost £1.4 billion in 2019-20.

NHSE and DHSC recognise that health outcomes are largely driven by wider factors beyond clinical healthcare, such as healthy behaviours, social and economic reasons and the physical environment. However, there has been little progress on establishing a structured approach for addressing these wider factors, which are affected by the policies of almost all central government departments.

There is an inherent tension between the local needs-based care strategies that ICSs are expected to prepare and a standardised health service delivering national NHS targets. ICSs must manage these tensions, achieving stretching efficiency targets and the national priorities NHSE has identified if they are to create capacity and resources to respond to local priorities.

To maximise the chances that ICSs can make meaningful progress in achieving their aims, the NAO recommends that DHSC works with departments across government to establish arrangements to address issues beyond clinical healthcare that contribute towards poor health, such as education, employment, benefits, and transport. DHSC should also publish the assessment of long-term factors affecting the health and regulated social care workforce that it commissioned from Health Education England, and the NHS plan to address staffing shortages. It should then publish at least annual progress updates against it. NHSE and DHSC should also publish plans that address the current financial deficits faced by the NHS, and ensure oversight arrangements properly assess joint working between the NHS and local government.

Gareth Davies, the head of the NAO, said:

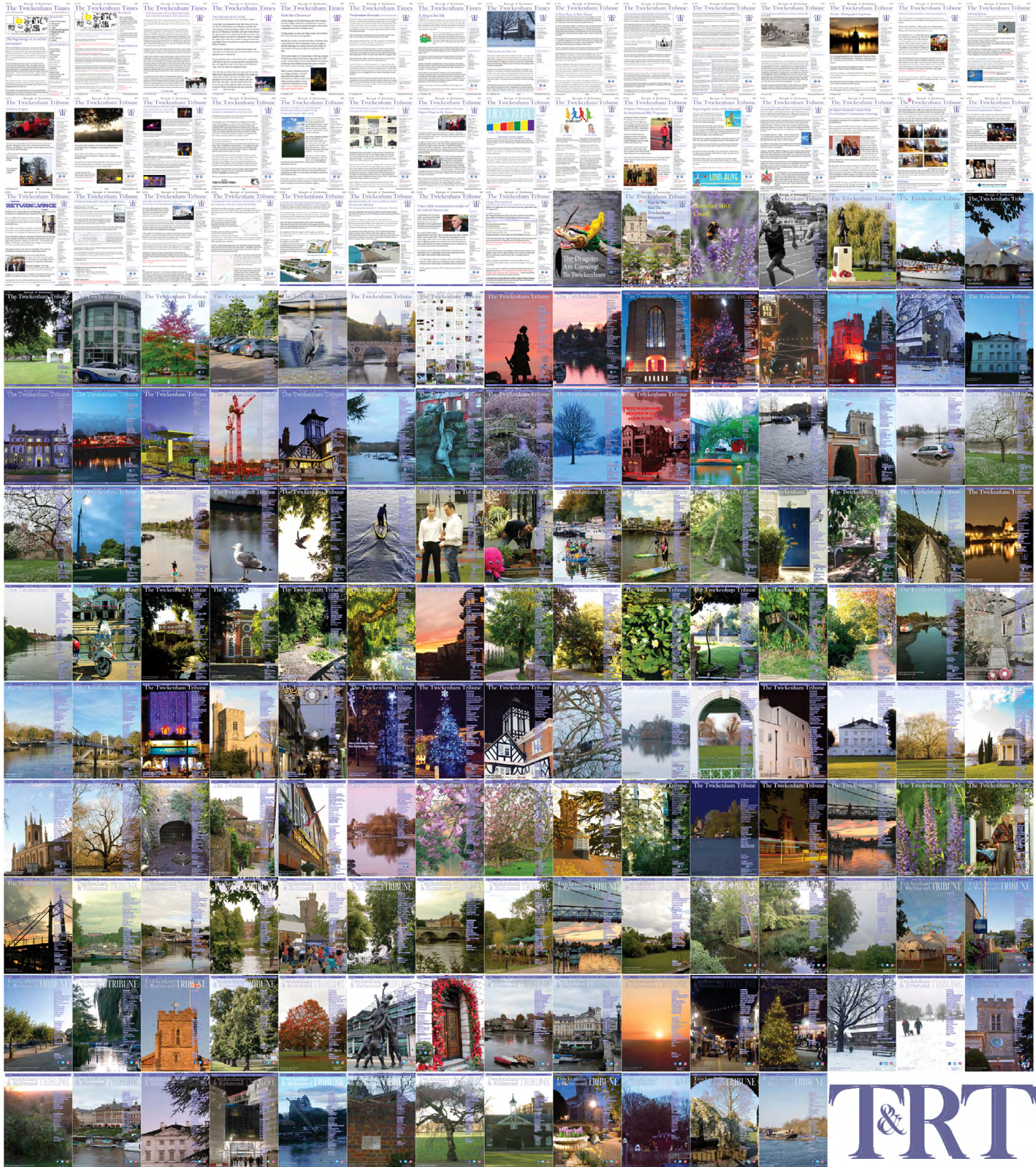
"The new model of integrated health and social care services is being implemented with broad support, but at a time of extreme pressure on both services. To maximise the chances of success for these new arrangements, DHSC and NHS England need to put realistic medium-term objectives in place. They must also tackle pressures on ICSs that require action at a national level, including workforce shortages in health and social care."

Click here for the [full report](#) and here for the [PAC Chair statement](#).



National Audit Office

310 editions of the **Twickenham & Richmond Tribune** online - Lots to read: News, Reviews, History, Sports and On-going Sagas in the Borough of Richmond upon Thames



Half Page

Quarter Page
Landscape

Quarter Page Portrait

Eighth Page

Eighth Page
Landscape

Example advert sizes shown above

Thousands read The Twickenham & Richmond Tribune

If you are reading this you could be advertising your business with
The Twickenham & Richmond Tribune. Community rates are
available

Contact: advertise@TwickenhamTribune.com

View ad details at www.TwickenhamTribune.com/advertise

Contact

contact@TwickenhamTribune.com
letters@TwickenhamTribune.com
advertise@TwickenhamTribune.com



Published by:

Twickenham & Richmond Tribune (in association with World InfoZone Limited)

Registered in England & Wales

Reg No 10549345

The Twickenham Tribune is registered with the ICO under the Data Protection Act, Reg No ZA224725

©Twickenham & Richmond Tribune. All rights reserved. No part of this publication may be used or reproduced without the permission of Twickenham & Richmond Tribune. While we take reasonable efforts, this online newspaper cannot be held responsible for the accuracy or reliability of information. The views and opinions in these pages do not necessarily represent those of The Twickenham & Richmond Tribune.

[Terms & Conditions](#)